

AutoCAD 2010

Stand-Alone Installation Guide

The Autodesk logo is displayed in white text on a black rectangular background. The text is oriented vertically, reading from bottom to top.

January 2009

© 2009 Autodesk, Inc. All Rights Reserved. Except as otherwise permitted by Autodesk, Inc., this publication, or parts thereof, may not be reproduced in any form, by any method, for any purpose.

Certain materials included in this publication are reprinted with the permission of the copyright holder.

Trademarks

The following are registered trademarks or trademarks of Autodesk, Inc., in the USA and other countries: 3DEC (design/logo), 3December, 3December.com, 3ds Max, ADI, Alias, Alias (swirl design/logo), AliasStudio, AliasWavefront (design/logo), ATC, AUGI, AutoCAD, AutoCAD Learning Assistance, AutoCAD LT, AutoCAD Simulator, AutoCAD SQL Extension, AutoCAD SQL Interface, Autodesk, Autodesk Envision, Autodesk Insight, Autodesk Intent, Autodesk Inventor, Autodesk Map, Autodesk MapGuide, Autodesk Streamline, AutoLISP, AutoSnap, AutoSketch, AutoTrack, Backdraft, Built with ObjectARX (logo), Burn, Buzzsaw, CAiCE, Can You Imagine, Character Studio, Cinestream, Civil 3D, Cleaner, Cleaner Central, ClearScale, Colour Warper, Combustion, Communication Specification, Constructware, Content Explorer, Create>what's>Next> (design/logo), Dancing Baby (image), DesignCenter, Design Doctor, Designer's Toolkit, DesignKids, DesignProf, DesignServer, DesignStudio, DesignStudio (design/logo), Design Web Format, Discreet, DWF, DWG, DWG (logo), DWG Extreme, DWG TrueConvert, DWG TrueView, DXF, Ecotect, Exposure, Extending the Design Team, Face Robot, FBX, Filmbox, Fire, Flame, Flint, FMDesktop, Freewheel, Frost, GDX Driver, Gmax, Green Building Studio, Heads-up Design, Heidi, HumanIK, IDEA Server, i-drop, ImageModeler, iMOUT, Incinerator, Inferno, Inventor, Inventor LT, Kaydara, Kaydara (design/logo), Kynapse, Kynogon, LandXplorer, LocationLogic, Lustre, Matchmover, Maya, Mechanical Desktop, Moonbox, MotionBuilder, Movimento, Mudbox, NavisWorks, ObjectARX, ObjectDBX, Open Reality, Opticore, Opticore Opus, PolarSnap, PortfolioWall, Powered with Autodesk Technology, Productstream, ProjectPoint, ProMaterials, RasterDWG, Reactor, RealDWG, Real-time Roto, REALVIZ, Recognize, Render Queue, Retimer, Reveal, Revit, Showcase, ShowMotion, SketchBook, Smoke, Softimage, SoftimageXSI (design/logo), SteeringWheels, Stitcher, Stone, StudioTools, Topobase, Toxik, TrustedDWG, ViewCube, Visual, Visual Construction, Visual Drainage, Visual Landscape, Visual Survey, Visual Toolbox, Visual LISP, Voice Reality, Volo, Vtour, Wire, Wiretap, WiretapCentral, XSI, and XSI (design/logo).

The following are registered trademarks or trademarks of Autodesk Canada Co. in the USA and/or Canada and other countries: Backburner, Multi-Master Editing, River, and Sparks.

The following are registered trademarks or trademarks of MoldflowCorp. in the USA and/or other countries: Moldflow, MPA, MPA (design/logo), Moldflow Plastics Advisers, MPI, MPI (design/logo), Moldflow Plastics Insight, MPX, MPX (design/logo), Moldflow Plastics Xpert.

All other brand names, product names or trademarks belong to their respective holders.

Disclaimer

THIS PUBLICATION AND THE INFORMATION CONTAINED HEREIN IS MADE AVAILABLE BY AUTODESK, INC. "AS IS." AUTODESK, INC. DISCLAIMS ALL WARRANTIES, EITHER EXPRESS OR IMPLIED, INCLUDING BUT NOT LIMITED TO ANY IMPLIED WARRANTIES OF MERCHANTABILITY OR FITNESS FOR A PARTICULAR PURPOSE REGARDING THESE MATERIALS.

Published by:
Autodesk, Inc.
111 McInnis Parkway
San Rafael, CA 94903, USA

Contents

Chapter 1	Quick Start to Stand-Alone Installation	1
	Preparing for Installation	1
	System Requirements	2
	Understanding Administrative Permission Requirements	5
	Locating Your Serial Number and Product Key	6
	Avoiding Data Loss During Installation	7
	Choosing a Language	7
	Configure Button	8
	Migrating Custom Settings	9
	Installing Multiple or Bundled Products	9
	Installing and Running the Product	9
	Installing AutoCAD	10
	Register and Activate AutoCAD	18
	Launch AutoCAD	19
	Add or Remove Features	19
	Reinstall or Repair AutoCAD	21
	Uninstall AutoCAD	22
	Installing Design Review	22
Chapter 2	Migrating and Customizing	25
	Migrate Custom Settings and Files from Previous Releases	25
	Migrate Custom Settings	26
	View the Migration Log File	30

Restore Profiles After Migrating Files from an Earlier Release	31
Use Migration Tools	31
Customize AutoCAD with Initial Setup	32
Export and Import Custom Settings from the Same Release	35
Export Custom Settings	38
Import Custom Settings	39
Migrating and Customizing Issues	40
What are the benefits of identifying my industry?	41
How is this information being used?	41
What happens if I skip or cancel Initial Setup?	41
What are the benefits of selecting task-based tools?	42
What is a workspace?	42
How do I make changes to a workspace at a later time?	42
What is a drawing template file?	43
How do I modify drawing templates at a later time?	43
What are the benefits of customizing AutoCAD?	43
How do I return to this later?	44
Chapter 3 Installation Troubleshooting	45
General Installation Issues	45
How can I check my graphics card driver to see if it needs to be updated?	45
What is a text editor used for?	46
When performing a Typical installation, what gets installed?	46
Why should I install the Material Library?	47
Where are my product manuals?	47
Licensing Issues	48
What is the difference between a stand-alone license and a network license?	48
What is the benefit of using a network licensed version of the software?	49
What is Internet Explorer used for?	49
Uninstall and Maintenance Issues	49
When adding or removing features, how can I tell what features get installed by default?	49
Is it possible to change the installation folder when adding or removing features?	51
When should I reinstall the product instead of a repair?	51
Do I need my original disc to reinstall my software?	51
After repairing my installation, is it possible to recover my settings?	51
When I uninstall my software, what files are left on my system?	51

Index 53

Quick Start to Stand-Alone Installation

1

The *Stand-Alone Installation Guide* provides instructions about how to prepare, and then install AutoCAD 2010. If you have never installed the product before, you should familiarize yourself with the entire installation process and options before beginning.

If you have a previous release installed, you should review the [Migrate Custom Settings and Files from Previous Releases](#) on page 25 section, so you can take full advantage of your custom settings.

For information about installing network-licensed versions of the program, see the following related topics:

- Choose an Installation Type (*Network Administrator's Guide*)
- Select a License Type (optional) (*Network Administrator's Guide*)
- What is the difference between a stand-alone license and a network license?
- What is the benefit of using a network licensed version of the software?

Preparing for Installation

To prepare for installation, you should review the system requirements, understand administrative permission requirements, locate your AutoCAD serial number and product key, and close all running applications. Complete these tasks, and you are ready to begin installing AutoCAD.

System Requirements

The first task you need to complete is to make sure that your computer meets the minimum system requirements. If your system does not meet these requirements, problems can occur, both within AutoCAD and at the operating system level.

Whether your Windows operating system is the 32-bit or the 64-bit version, the version is automatically detected during installation. The appropriate version of AutoCAD is installed. A 64-bit version of AutoCAD cannot be installed on a 32-bit system and vice-versa.

See the following table for hardware and software requirements.

32-bit Hardware and Software Requirements

Operating systems	Windows® XP Home and Professional Edition SP2 or later Microsoft® Windows Vista® SP1 or later including: <ul style="list-style-type: none">■ Windows Vista Enterprise■ Windows Vista Business■ Windows Vista Ultimate■ Windows Vista Home Premium	For more information on Windows Vista versions see http://www.microsoft.com/windowsvista/versions/
Browser	Internet Explorer® 7.0 or later	
CPU type	<i>Windows XP</i> - Intel® Pentium® 4 or AMD Athlon™ Dual Core processor, 1.6 GHz or higher with SSE2 technology <i>Windows Vista</i> - Intel Pentium 4 or AMD Athlon Dual Core processor, 3.0 GHz or higher with SSE2 technology	
Memory	<i>Windows XP</i> - 2 GB RAM <i>Windows Vista</i> - 2 GB RAM	
Display resolution	1024 x 768 with True Color	
Hard disk	Installation 1 GB	A 32-bit AutoCAD cannot be installed on a 64-bit Windows operating system and vice-versa.

32-bit Hardware and Software Requirements

Pointing device MS-Mouse compliant

- 3D Modeling Additional Requirements**
- Intel Pentium 4 or AMD Athlon processor, 3.0 GHz or higher; or Intel or AMD Dual Core processor, 2.0 GHz or higher
 - 2 GB RAM or greater
 - 2 GB free hard disk space available not including installation
 - 1280 x 1024 32-bit color video display adapter (True Color) 128 MB or greater, Direct3D® capable workstation class graphics card
-

64-bit Hardware and Software Requirements

Operating systems Windows® XP Professional x64 Edition SP2 or later
Microsoft® Windows Vista® SP1 or later including:

- Windows Vista Enterprise
- Windows Vista Business
- Windows Vista Ultimate
- Windows Vista Home Premium

For more information on Windows Vista versions see <http://www.microsoft.com/windowsvista/versions/>

Browser Internet Explorer 7.0 or later

CPU type AMD Athlon 64 with SSE2 technology
AMD Opteron™ with SSE2 technology
Intel Xeon with Intel EM64T support and SSE2 technology
Intel Pentium 4 with Intel EM64T support and SSE2 technology

Memory *Windows XP* - 2 GB RAM
Windows Vista - 2 GB RAM

64-bit Hardware and Software Requirements

Display resolution 1024 x 768 with True Color

Hard disk Installation 1.5 GB

A 64-bit AutoCAD cannot be installed on a 32-bit Windows operating system and vice-versa.

Pointing device MS-Mouse compliant

3D Modeling Additional Requirements

- Intel Pentium 4 or AMD Athlon processor, 3.0 GHz or higher; or Intel or AMD Dual Core processor, 2.0 GHz or higher
- 2 GB RAM or greater
- 2 GB free hard disk space available not including installation
- 1280 x 1024 32-bit color video display adapter (True Color) 128 MB or greater, Direct3D® capable workstation class graphics card

Additional Hardware and Software Recommendations - 3D use

Operating system

32-Bit
Windows XP Home and Professional SP2 or later
Windows Vista Enterprise
Windows Vista Business
Windows Vista Ultimate
Windows Vista Home Premium

64-Bit
Windows XP Professional x64 Edition SP2 or later
Windows Vista Enterprise 64-bit
Windows Vista Business 64-bit
Windows Vista Ultimate 64-bit
Windows Vista Home Premium 64-bit

- It is recommended that non-English language versions of AutoCAD be installed on an operating system with a user interface language that matches the code page of AutoCAD language. A code page provides support for character sets used in different languages.
- Whether the Windows operating system is 32-bit or 64-bit, the version is automatically detected when you install AutoCAD. The appropriate version of AutoCAD is installed. The 32-bit version of AutoCAD cannot be installed on

Additional Hardware and Software Recommendations - 3D use

a 64-bit version of Windows and vice-versa.

Processor	Intel Pentium 4 processor or AMD Athlon, 2.2 GHz or greater or Intel or AMD Dual Core processor, 1.6 GHz or greater
------------------	---

RAM	2 GB (or greater)
------------	-------------------

Graphics card	1280 x 1024 32-bit color video display adapter (True Color); 128 MB or greater Direct3D capable workstation class graphics card. For Windows Vista, a Direct3D capable workstation class graphics card with 128 MB or greater is required; 1024 x 768 VGA with True Color (minimum)	<ul style="list-style-type: none">■ For graphic cards that support Hardware Acceleration, DirectX 9.0c, or later, must be installed.■ Installing from the <i>ACAD.msi</i> file does not install DirectX 9.0c, or later. Manual installation of DirectX is required, in this circumstance, for Hardware Acceleration to be configured.
----------------------	--	--

For more information about tested and certified graphics cards, visit <http://autodesk.com/graphicscard/>

Hard disk	2 GB (in addition to the 1 GB or above required for installation)
------------------	---

NOTE Adobe Flash Player is not installed by default. If a version of Flash is not currently installed on your system, a message is displayed requesting that you download it from Adobe's website. If you do not have Internet access, you can also access the Flash installer on the AutoCAD disc.

Understanding Administrative Permission Requirements

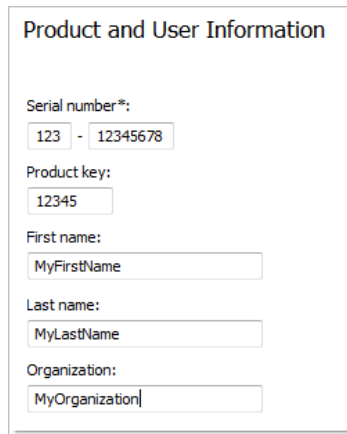
To install AutoCAD, you must have administrator permissions. You do not need to have domain administrative permissions. See your system administrator for information about administrative permissions.

You do not need administrator permissions to run AutoCAD. You can run the program as a limited user.

Locating Your Serial Number and Product Key

When you install AutoCAD, you are prompted for your serial number and product key in the Product and User Information page. The serial number and product key are located on the outside of the product packaging, or in the email you received if you downloaded your product. Make sure to have these available before you install the program so that you don't have to stop in the middle of the installation.

The serial number must contain a three-digit prefix followed by an eight-digit number. The product key consists of five digits.



The screenshot shows a dialog box titled "Product and User Information". It contains the following fields:

- Serial number*: A text box containing "123" followed by a hyphen "-" and another text box containing "12345678".
- Product key: A text box containing "12345".
- First name: A text box containing "MyFirstName".
- Last name: A text box containing "MyLastName".
- Organization: A text box containing "MyOrganization".

The information you enter is permanently retained with the product. Because you can't change this information later without uninstalling, take care when entering the information. To review this product information later, on the InfoCenter toolbar, click the drop-down arrow next to the Help button (the question mark). Then click About.

NOTE If you have lost your serial number or product key, contact the Autodesk Business Center (ABC) at 800-538-6401 for assistance.

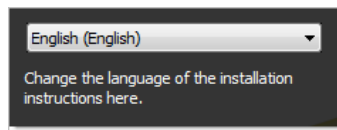
Avoiding Data Loss During Installation

The AutoCAD installation process may stop if some applications (such as Microsoft® Outlook® or virus-checking programs) are running. Close all running applications to avoid possible installation problems and data loss.

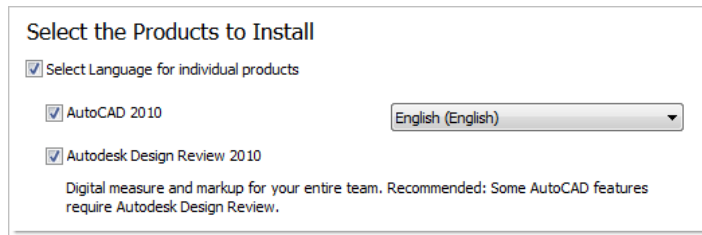
Choosing a Language

You can select a different language for installation instructions, and a language for individual product installations in the same install process.

When you start the installation process, the installer automatically determines your operating system language. If a supported language is detected, your install pages are displayed in that language. If you want to change that language, you select a different one from the installer language list on the first page of the Installation wizard.



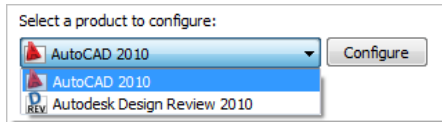
You can also select a language for an individual product by clicking the Select Language for Individual Products check box on the Select the Products to Install page, and then selecting a language from the drop-down list.



NOTE Some products may not have multiple languages available at the time of product release. Additional language packs may be available later for Subscription customers. Refer to <http://autodesk.com/servicesandsupport> for the availability of additional language packs.

Configure Button

During the installation process, you choose either a typical installation (install the product with default settings), or a customized installation. If you choose to customize, you start that process in the Review - Configure - Install dialog box. Select the appropriate product from the drop-down list, and click the Configure button.



After you click the Configure button, the following dialog boxes and options are displayed:

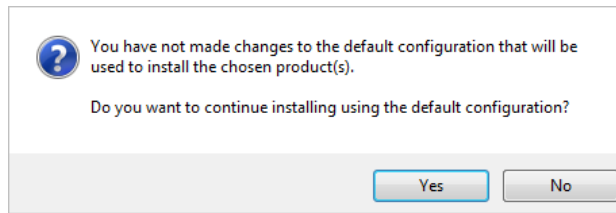
- **Select the License Type** - *Stand-Alone license* or *Network license*. If you choose Network license, you also need to select the license server model - Single, Distributed, or Redundant.
- **Select the Installation Type** - *Typical* or *Custom*. If you choose a Typical installation (default settings), the product installs the most common application features. To see which features are included in a Typical installation, refer to [When performing a Typical installation, what gets installed?](#) on page 46 If you choose Custom, you select specific features to install.
- **Include a Service Pack** - If a service pack is available for your installation, you can include it.

When you have completed your choices, click the Configuration Complete button. This takes you back to the Review - Configure - Create dialog box, where you can review your selections and complete the installation process.

NOTE To get a copy of your settings, select the Copy to Clipboard button.



If you do not wish to make configuration changes on the Review - Configure - Install page, click Install. Then click Yes, to continue installing using the typical configuration.



Migrating Custom Settings

You can migrate your custom settings and files from previous releases of AutoCAD (<AutoCAD 2000> through <AutoCAD 2010>). It is recommended that you migrate custom settings from a previous release right away. This prevents you from overwriting files or having to keep track of any custom settings you may make in the new release. Migrating settings overwrites any new settings.

For more details regarding migration, see [Migrate Custom Settings and Files from Previous Releases](#) on page 25.

Installing Multiple or Bundled Products

Some Autodesk packages are comprised of multiple products or are part of *multi-product bundles*.

In the Installation wizard, for packages containing multiple products, you can choose which products and languages you want to install. During the install process, you are informed whether a copy of the software is already installed. You are also warned if your system does not meet the minimum system requirements for the product. Each product name is displayed on its own tabbed panel; you can configure them individually.

If you purchased a package that is a multi-product bundle, such as an educational or institutional package, you may have a package that includes several Autodesk products. For these bundled packages, an Installer disc contains information for all the products in the package. The Installer disc helps you install all of the products.

Installing and Running the Product

To use the product, you must install the product, register and activate it, and then launch it. You must have administrative permissions to install AutoCAD.

This section provides instructions for installing and activating AutoCAD for an individual user on a stand-alone computer. For information about installing network-licensed or multi-seat stand-alone versions of the program, see the *Network Administrator's Guide*.

Installing AutoCAD

The AutoCAD Installation wizard contains all installation-related material in one place. From the Installation wizard, you can access user documentation, change the installer language, select a language-specific product, install supplemental tools, and add online support services.

- **Review installation documentation before you install.** It is recommended that you take the time to familiarize yourself with the complete installation process before you install AutoCAD. You can access PDF versions of the installation and licensing manuals from the product's Installation wizard by selecting the Read this Documentation selection, the Documentation link at the bottom, left pane of the install pages, or through the Help system.

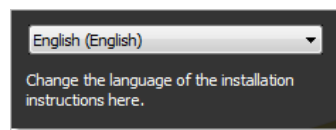
You can also access PDFs from the product discs by navigating to the documentation (*docs*) folder. For late-breaking information, it is also recommended that you review the product *Readme*.

NOTE To view or print any files with an extension of *.pdf*, Adobe® Reader® must be installed on your computer. If you do not have Adobe Reader, you can download the latest version by visiting www.adobe.com.

To install AutoCAD using default values on a stand-alone computer

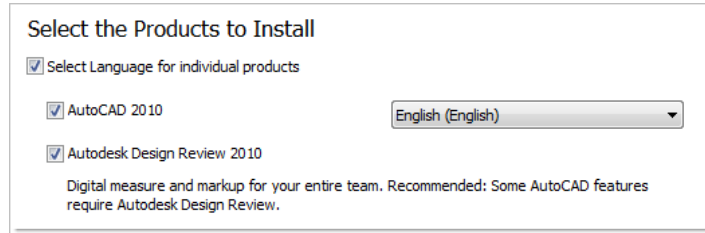
This is the fastest means of installing AutoCAD on your system. Only default values are used which means it is a typical installation being installed to *C:\Program Files\<AutoCAD>*.

- 1 Insert the AutoCAD disc(s) into your computer's drive.
- 2 In the AutoCAD Installation wizard, select a language for the install instructions or accept the default language. Click Install Products.



- 3 Select the product(s) and the language for the product(s) you want to install. Click Next.

In order to choose a language for an individual product, you first must click the Select Language for Individual Products check box, then select the language from the drop-down list. In some cases, additional languages may not be available for the products you choose to install.



NOTE Autodesk Design Review 2010 is not installed by default when you install AutoCAD. It is recommended that you install Design Review if you need to view DWF or DWFx files. For more information about Design Review, see [Installing Design Review](#) on page 22.

- 4 Review the Autodesk software license agreement for your country or region. You must accept this agreement to proceed with the installation. Select your country or region, click I Accept, and then click Next.

NOTE If you do not agree to the terms of the license and want to terminate the installation, click Cancel.

- 5 On the Products and User Information page, enter your serial number, product key, and user information. Review the *Privacy Policy* from the link at the bottom of the dialog box. After reviewing, click Next.

Product and User Information

Serial number*:
123 - 12345678

Product key:
12345


First name:
MyFirstName

Last name:
MyLastName

Organization:
MyOrganization

NOTE The information you enter here is permanent and is displayed in the Help menu on your computer. Because you can't change this information later without uninstalling the product, make sure you enter the correct information.

- 6 If you do not want to make configuration changes on the Review - Configure - Install page, select Install. Then select Yes to continue installing using the default configuration.

 You have not made changes to the default configuration that will be used to install the chosen product(s).
Do you want to continue installing using the default configuration?

Yes No

The wizard does the following:

- Uses a Typical installation, which installs the most common application features. To see which features are included in a Typical installation, refer to [When performing a Typical installation, what gets installed?](#) on page 46.
- Includes the Express Tools library. The library provides additional productivity tools.
- Installs AutoCAD to the default install path of *C:\Program Files\<AutoCAD>*.

7 Click Install.

8 On the Installation Complete page, you can choose the following:

View the installation log file If you want to view the installation log file, its location is displayed.

View the AutoCAD Readme The *Readme* file is opened from this page when you click Finish. This file contains information that was unavailable when the AutoCAD documentation was prepared. If you do not want to view the *Readme* file now, clear the check box next to Readme.

NOTE You can also view the *Readme* file after you have installed AutoCAD.

To install AutoCAD using configured values on a stand-alone computer

With this installation method, you can fine-tune exactly what gets installed by using the Configure option. You can alter the installation type, the install path, and the license type. You can also install Material libraries and Tutorial files.

1 Insert the AutoCAD disc(s) into your computer's drive.

2 In the AutoCAD Installation wizard, select a language for the install instructions or accept the default language. Click Install Products.

3 Select the product(s) and the language for the product(s) you want to install. Click Next.

To select a language for an individual product, click the Select Language for Individual Products check box, then select the language from the language drop-down list. In some cases, additional languages may not be available for the products you choose to install.

NOTE Autodesk Design Review 2010 is not installed by default when you install AutoCAD. It is recommended that you install Design Review if you need to view DWF or DWFx files. For more information about Design Review, see [Installing Design Review](#) on page 22.

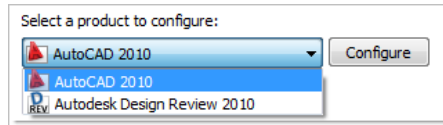
4 Review the Autodesk software license agreement for your country or region. You must accept this agreement to proceed with the installation. Choose your country or region, click I Accept, and then click Next.

NOTE If you do not agree to the terms of the license and want to terminate the installation, click Cancel.

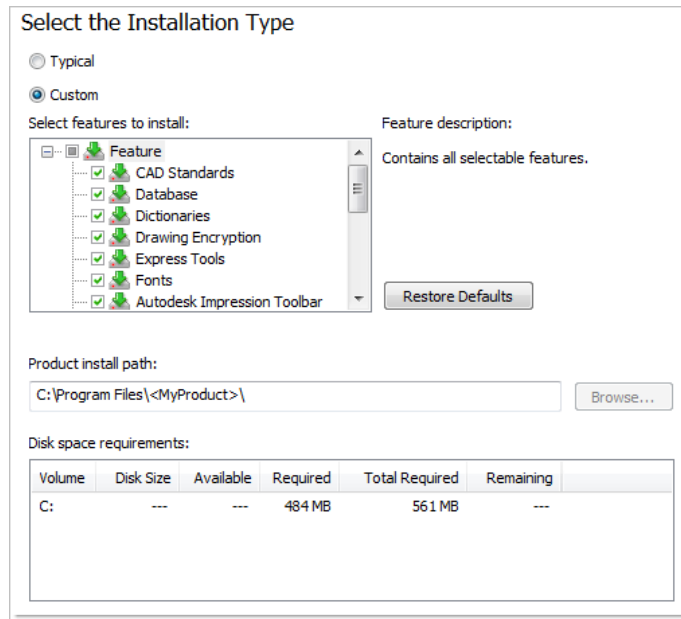
- 5 On the Products and User Information page, enter your serial number, product key, and user information. Review the *Privacy Policy* from the link at the bottom of the dialog box. After reviewing, click Next.

NOTE The information you enter here is permanent and is displayed in the Help menu on your computer. Because you can't change this information later without uninstalling the product, make sure you enter the correct information.

- 6 On the Review - Configure - Install page, click Configure to make configuration changes such as installation type, installing optional tools, or changing the installation path.



- 7 On the Select the License Type page, you can choose to install a Stand-alone or Network license. Click Next.
- 8 On the Select the Installation Type page, you can choose to make the following configuration changes:



- Typical - Installs the most common application features.
- Custom - Installs only the application features that you select from the Select Features to Install list

CAD Standards	Contains tools for reviewing design files for compliance with your standards.
<hr/>	
Database	Contains database access tools.
<hr/>	
Dictionaries	Contains multi-language dictionaries.
<hr/>	
Drawing Encryption	Allows you to use the Security Options dialog box to protect a drawing with a password.
<hr/>	
Express Tools	Contains AutoCAD support tools and utilities (not supported by Autodesk).
<hr/>	
Fonts	Contains AutoCAD fonts and TrueType fonts.
<hr/>	
Autodesk Impression Toolbar	The Impression toolbar allows you to quickly export any view to Autodesk Impression for advanced line effects.
<hr/>	

Autodesk Seek	Autodesk Seek. <hr/> NOTE Seek will only be installed in the English version of AutoCAD. <hr/>
Material Library	The Material Library contains over 300 professionally built materials to apply to your model.
New Features Workshop	Contains animated demos, exercises, and sample files to help users learn the new features.
License Transfer Utility	Allows users to transfer an Autodesk product license between computers. <hr/> NOTE The utility will not be installed on unlocked versions of AutoCAD. <hr/>
Migrate Custom Settings	Migrates custom settings and files from previous version of your product to this version.
Initial Setup	Allows users to set up their initial configuration of AutoCAD (online content, workspaces) based on their units system, industry, and commonly used task-based tools.
Reference Manager	Allows users to view and edit the paths of externally referenced files associated with a drawing.
Samples	Contains various feature sample files.
Tutorials	Contains tutorials.
VBA Support	Contains Microsoft Visual Basic for Applications support files.

- Product Install Path - Specifies the drive and location where AutoCAD will be installed.
- Create a Desktop Shortcut - Choose whether to display the AutoCAD shortcut icon on your desktop. A product icon is displayed on your desktop by default. Clear the check box if you do not want to display the shortcut icon.

- 9 On the Include Service Packs page, if service packs are available for your product, you can select to include them. The installer automatically checks *autodesk.com* for available updates. If updates are available, a link is displayed.

- 10 Click another product tab to configure another product, or click Next and then Configuration Complete to return to the Review - Configure - Install page. Then, click Install.

NOTE If you want a copy of your configuration summary information, click the Copy to Clipboard button.

- 11 On the Installation Complete page, you can choose the following:

View the installation log file If you want to view the installation log file, its location is displayed.

View the AutoCAD Readme The *Readme* file is opened from this page when you click Finish. This file contains information that was unavailable when the AutoCAD documentation was prepared. If you do not want to view the *Readme* file now, clear the check box next to Readme.

NOTE You can also view the *Readme* file after you have installed AutoCAD.

12 Click Finish.

You have successfully installed AutoCAD. You are now ready to register your product and start using the program. To register the product, start AutoCAD and follow the on-screen instructions.

NOTE Autodesk does not recommend or support the distribution of AutoCAD using imaging software. However, if you plan to use this method of distribution, please review the instructions detailed in the *Network Administrator's Guide*.

Register and Activate AutoCAD

The first time you start AutoCAD, the Product Activation wizard is displayed. You can either activate AutoCAD at that time or run AutoCAD and activate it later. Until you register and enter a valid activation code for AutoCAD, you are operating the program in *trial mode* and the Product Activation wizard is displayed for 30 days from the first time that you run the program.

If after 30 days of running AutoCAD in trial mode you have not registered and provided a valid activation code, your only option is to register and activate AutoCAD. You will not be able to run in trial mode after the 30 days expires. Once you register and activate AutoCAD, the Product Activation wizard is no longer displayed.

The fastest and most reliable way to register and activate your product is by using the Internet. Simply enter your registration information and send it to Autodesk over the Internet. Once you submit your information, registration and activation occur quickly.

To register and activate AutoCAD

- 1 Do one of the following:
 - (Windows XP) Click Start menu ► Programs ► Autodesk ► *<AutoCAD>* ► *<AutoCAD>*.
 - (Windows Vista) Click Start menu ► All Programs ► Autodesk ► *<AutoCAD>* ► *<AutoCAD>*.
- 2 In the AutoCAD Product Activation wizard, select Activate the Product, and then click Next.

This starts the Register Today process.

- 3 Click Register and Activate (Get an Activation Code).
- 4 Click Next and follow the on-screen instructions.

If you do not have Internet access, or if you want to use another method of registration, you can register and activate AutoCAD in one of the following ways:

Email Create an email message with your registration information and send it to Autodesk.

Fax or Post/Mail Enter your registration information, and fax or mail the information to Autodesk.

Launch AutoCAD

Assuming that you followed all of the previous steps outlined in this installation section, you can launch AutoCAD and start taking advantage of its new and updated features. For more information about the new features, see the *New Features Workshop* after you launch the product.

You can start AutoCAD in the following ways:

- **Desktop shortcut icon.** When you install AutoCAD, an AutoCAD shortcut icon is placed on your desktop unless you cleared that option during installation. Double-click the AutoCAD icon to start the program.
- **Start menu.** On the Start menu (Windows XP), click Programs or (Windows Vista) All Programs ► Autodesk ► <AutoCAD> ► <AutoCAD>.
- **Location where the AutoCAD is installed.** If you have administrative permissions, you can run AutoCAD in the location where you installed it. If you are a limited-rights user, you must run AutoCAD from the Start menu or from the desktop shortcut icon. If you want to create a custom shortcut, make sure that the Start In directory for the shortcut points to a directory where you have write permissions.

Add or Remove Features

You can add or remove AutoCAD features at any time. For example, you may have chosen a Custom installation option when you first installed AutoCAD, but now you want to add features that you did not install originally. Or you

may no longer need to use all of the features that were installed originally. You can add or remove features by using the Add or Remove Programs dialog box.

To add or remove features

- 1 Do one of the following:
 - (Windows XP) Click Start menu ► Settings ► Control Panel ► Add or Remove Programs.
 - (Windows Vista) Click Start menu ► Control Panel ► Programs and Features ► Uninstall or Change a Program.
- 2 In the Add or Remove Programs dialog box, click AutoCAD, and then click Change/Remove.
The AutoCAD Installation wizard re-opens in Maintenance Mode.
- 3 Click Add or Remove Features.
- 4 On the Add/Remove Features page, select a feature to install or uninstall. The icons to the left of the selections give you an indication of the action that will be taken.



Indicates a feature that was marked for installation will be in a typical installation.



Indicates a feature that is not currently scheduled for installation.



Indicates a feature that was not originally marked for installation, but was added to the installed feature list.



Indicates an installed feature that is chosen for removal.

NOTE If you need to revert to AutoCAD features that you selected in your original installation, click Cancel.

Click Next.

- 5 On the Update AutoCAD Installation page, click Next.
- 6 On the Update Complete page, you are informed when the updates have been performed. Click Finish.

Reinstall or Repair AutoCAD

If you accidentally delete or alter files that are required by AutoCAD, AutoCAD might not perform correctly, and you might receive error messages when you try to execute a command or find a file. You can attempt to fix this problem by reinstalling or repairing AutoCAD. The reinstallation or repair uses the features that were part of the installation type you chose when you initially installed the program.

To reinstall or repair AutoCAD

- 1 Do one of the following:
 - (Windows XP) Click Start menu ► Settings ► Control Panel ► Add or Remove Programs.
 - (Windows Vista) Click Start menu ► Control Panel ► Programs and Features ► Uninstall or Change a Program.
- 2 Then, do one of the following:
 - (Windows XP) In the Add or Remove Programs window, select AutoCAD, then click Change/Remove.
 - (Windows Vista) In the Uninstall or Change a Program window, select AutoCAD, then click Uninstall/Change.

The AutoCAD Installation wizard re-opens in Maintenance mode.
- 3 Select Repair or Reinstall. On the Select Repair or Reinstall page, select one of the following options, and then click Next to start the process.
 - **Repair My <AutoCAD> Installation.** This option replaces all registry entries that AutoCAD initially installed and restores AutoCAD to its default state. If you are missing AutoCAD files, use this option.
 - **Reinstall My <AutoCAD> Installation.** This option repairs the registry and reinstalls all files from the original installation. Use this option if the Repair My <AutoCAD> Installation option does not solve the problem.
- 4 On the Repair Complete page, click Finish.

Uninstall AutoCAD

When you uninstall AutoCAD, all components are removed. This means that even if you've previously added or removed components, or if you've reinstalled or repaired AutoCAD, the uninstall removes all AutoCAD installation files from your system.

To uninstall AutoCAD

- 1 Do one of the following:
 - (Windows XP) Click Start menu ► Settings ► Control Panel ► Add or Remove Programs.
 - (Windows Vista) Click Start menu ► Control Panel ► Programs and Features ► Uninstall or Change a Program.
- 2 Then, do one of the following:
 - (Windows XP) In the Add or Remove Programs window, select AutoCAD, then click Change/Remove.
 - (Windows Vista) In the Uninstall or Change a Program window, select AutoCAD, then click Uninstall/Change.

The AutoCAD Installation wizard re-opens in Maintenance mode.
- 3 Click Uninstall.
- 4 On the Uninstall <AutoCAD> page, click Next to remove AutoCAD from the system.
- 5 When informed that the product has been successfully uninstalled, click Finish.

NOTE Even though AutoCAD is removed from your system, the software license remains. If you reinstall AutoCAD at some future time, you will not have to register and re-activate the program.

Installing Design Review

Autodesk Design Review 2010 is not installed by default when you install AutoCAD. It is recommended that Design Review be installed if you need to view DWF or DWFx files.

NOTE If you use Windows Vista, you can view and print DWFx files without installing Design Review.

Autodesk Design Review is a free program used for creating and reviewing DWF or DWFx files. An open, published, and secure file format developed by Autodesk, DWF enables you to combine and publish rich 2D- and 3D-design data, and share it with others.

The following commands create DWF or DWFx files.

- PUBLISH
- PLOT
- 3DDWF
- PUBLISH TO WEB
- EXPORT
- AUTOPUBLISH
- SSM

Migrating and Customizing

2

If you have a previous version of AutoCAD installed on your system, you can install a newer version of AutoCAD and keep other versions of the program on the same system. This is called a *side-by-side* installation. If you've purchased an *upgrade* version of AutoCAD, you are required to uninstall the previous version within 120 days of installing your newer product. See your license agreement for more information.

In this section, you learn about migrating from previous releases, using customized files from previous releases, and locating customized files.

Migrate Custom Settings and Files from Previous Releases

You can migrate your custom settings and files from previous releases of AutoCAD to your new release. It is recommended that you migrate from a previous release right away. This prevents you from overwriting files or having to keep track of any custom settings you may make in the new release. Migrating settings overwrites any new settings.

You can use the following tools to migrate settings and files:

- **Migrate Custom Settings dialog box.** Migrates user profiles, CUI files, AutoCAD and user-defined linetype files, AutoCAD and user-defined hatch patterns, and the *acad.pgp* file (a file that stores command definitions and aliases). The Migrate Custom Settings dialog box is displayed when you start the product for the first time. You can also migrate settings later from the Start menu (Windows).
- **Customize User Interface dialog box.** Converts legacy menu files (MNU and MNS) to the CUI format while leaving the original MNU or MNS file unchanged. Migrating user interface elements, transferring data between customized files, and customizing user interface elements are simplified in

this dialog box. For more information about the CUI format and how migration of menu files has been simplified, see *Customize the User Interface* in the *Customization Guide*.

- **Migration tools.** Aid migration of settings or files that cannot be automatically migrated (such as AutoLISP® files and the accompanying MNL files) or that require you to make a decision about which files to migrate (such as which files in a set of drawing files). Download these migration tools by visiting www.autodesk.com and then performing a search on Migration Tools.

NOTE For information about customizing files and settings, see the *Customization Guide*, accessible from the Documentation link on the AutoCAD Installation wizard and in the Help system.

Migrate Custom Settings

If you install AutoCAD on a computer where a previous release of the AutoCAD product is installed, you can migrate some custom settings from a previous release to your newer AutoCAD product.

Migrate the user profile. This file contains drawing environment settings such as screen color, cursor size, command line window font, and the dictionary to use for checking spelling. The user profile file also includes the folders in which AutoCAD searches for support, driver, customization, and other files. If you customized files in a location other than the default AutoCAD location, the path to the location is migrated. The files themselves do not get migrated.

Migrate linetypes, hatch patterns, and command aliases that you created. The data from these files is added to a user-defined section of the AutoCAD files, to make it easy for you to find this information and migrate this data to future releases. You cannot use the Migrate Custom Settings dialog box to migrate shell commands or comments that you made to your *acad.pgp* file.

NOTE If you have made changes to partial plotter configuration (PC3) files that are located in a custom folder, those files are migrated to the *AutoCAD PC3* folder, which is located under your custom *PC3* folder. PC3 files are migrated to a separate folder to maintain backward compatibility with previous AutoCAD releases.

The following table lists the files that are migrated with the Migrate Custom Settings dialog box, a description of each file, and file details to help you decide if you want to migrate a file.

Files Migrated with the Migrate Custom Settings Dialog Box

File Name	File Description	Details
<i>*.arg</i>	Used to back up user profile information from the system registry. The ARG file is not migrated. Registry settings are migrated.	Changes you make to your user profile are stored in the system registry and are migrated.
<i>*.lin</i>	Stores your user-defined linetypes.	User-defined linetype files are migrated.
<i>acad.lin</i>	Contains standard linetype definitions (an AutoCAD library file).	The file itself is not migrated; however, any linetypes that you created in this file are migrated to the AutoCAD <i>acad.lin</i> file, in the <i>User Defined Linetypes</i> section of the file.
<i>acadiso.lin</i>	Contains metric linetype definitions (an AutoCAD library file).	The file itself is not migrated; however, any linetypes that you created in this file are migrated to the AutoCAD <i>acadiso.lin</i> file, in the <i>User Defined Linetypes</i> section of the file.
<i>*.pat</i>	Stores user-defined hatch patterns.	User-defined hatch pattern files are migrated.
<i>acad.pat</i>	Contains standard hatch pattern definitions (an AutoCAD library file).	The file itself is not migrated; however, any hatch patterns that you created in this file are copied to the AutoCAD <i>acad.pat</i> file, in the <i>User Defined Hatch Patterns</i> section of the file.
<i>acadiso.pat</i>	Contains metric hatch pattern definitions (an AutoCAD library file).	The file itself is not migrated; however, any metric hatch patterns that you created in this file are copied to the AutoCAD <i>acadiso.pat</i> file, in the

Files Migrated with the Migrate Custom Settings Dialog Box

File Name	File Description	Details
		<i>User Defined Hatch Patterns</i> section of the file.
<i>acad.pgp</i>	Stores shell commands and command alias definitions (a program parameters file in ASCII text form).	The file itself is not migrated; however, any command aliases you created in this file are copied to the AutoCAD <i>acad.pgp</i> file.
<i>*.mnu</i>	Contains menu customization from an AutoCAD version earlier than AutoCAD 2006.	The file itself is not migrated; however, a copy of the file is created and then is converted into a CUI file with the same name. The new CUI file is placed in the same folder as the main CUI file. A MNU file is converted when a MNS file with the same name is not found.
<i>*.mns</i>	Contains menu customization from a version of an AutoCAD earlier than AutoCAD 2006.	The file itself is not migrated; however, a copy of the file is created and then is converted into a CUI file with the same name. The new CUI file is placed in the same folder as the main CUI file. A MNS file is converted when a MNU file with the same name is present or not.
<i>*.cui</i>	Contains customizations from a version of an AutoCAD starting with AutoCAD 2006.	If the CUI file is supplied by Autodesk, the custom changes made to the file are migrated to the newer version of the CUI file. If the CUI file is not supplied by Autodesk, the file is migrated and is copied to where the main CUI file is located, unless the CUI file is in a network location. In that case, the file is migrated but is not copied to the location of the main CUI file. Enterprise CUI files are not migrated automatically. You must migrate them manually.

Before the MNU, MNS, and CUI files are migrated, a backup copy of each file is saved in the following directory:

- (Windows XP) <drive>:\Documents and Settings*<user profile>*\Application Data\Autodesk*<product version>*\<release number>\<language>\Previous Version Custom Files
- (Windows Vista) <drive>:\Users*<user profile>*\Application Data\Autodesk*<product version>*\<release number>\<language>\Previous Version Custom Files

NOTE Other custom settings and files can be migrated using Autodesk migration tools. For more information about migration tools, see [Use Migration Tools](#) on page 31.

To migrate custom settings when you start the AutoCAD

- 1 Start AutoCAD.
- 2 In the Migrate Custom Settings dialog box, in the Migrate Settings From list, select the AutoCAD release from which you want to migrate your custom settings.
- 3 In the Settings and Files to Migrate box, select the custom files that you want to migrate.
- 4 Click OK.
- 5 In the Migrate Custom Settings message, click OK to view the log file, or click No if you do not want to view the log file now.

NOTE You can view the log file at another time. For information about accessing the log file at another time, see [View the Migration Log File](#) on page 30.

Each time the Migrate Custom Settings dialog box is used, AutoCAD resets the program's default CUI file from the *UserDataCache* folder and then migrates any customization done in a previous release forward.

To migrate custom settings from the Start menu (Windows)

- 1 Do one of the following:
 - (Windows XP) Click Start menu ► Programs ► Autodesk ► <AutoCAD> ► Migrate Custom Settings ► Migrate From a Previous Release.

- (Windows Vista) Click Start menu ► All Programs ► Autodesk ► <AutoCAD> ► Migrate Custom Settings ► Migrate From a Previous Release.
- 2 In the Migrate Custom Settings dialog box, in the Migrate Settings From list, select the AutoCAD release from which you want to migrate your custom settings.
 - 3 In the Settings and Files to Migrate box, select the custom files that you want to migrate.
 - 4 Click OK.
 - 5 In the Migrate Custom Settings message, click OK to view the log file, or click No if you do not want to view the log file.

NOTE To be accessible, pull-down menus that are migrated from a MNU/MNS file to a CUI file need to be added to a workspace.

View the Migration Log File

The migration log file (*migration.xml*) provides specific information about any settings or files that were not successfully migrated to AutoCAD. The log file shows all the files that were successfully copied from a previous version to the newer AutoCAD. It also provides information about files that were not successfully migrated. Use the log for troubleshooting if there are unwanted or unexpected results in your AutoCAD profiles.

After you use the Migrate Custom Settings dialog box to migrate custom settings and files, a message is displayed from which you open the migration log file. You can view the migration log file at that time. You can also navigate to the file if you want to view the log details another time.

To locate and view the migration log file

- 1 In Windows Explorer, navigate to the following location:
 - (Windows XP) <drive>:\Documents and Settings\<user profile>\Application Data\Autodesk\<product version>\<release number>\<language>\Migration
 - (Windows Vista) <drive>:\Users\<user profile>\Application Data\Autodesk\<product version>\<release number>\<language>\Migration

- 2 Double-click *migration.xml* to open the file, and view the details of your migration.

Restore Profiles After Migrating Files from an Earlier Release

After you migrate your profiles from an earlier AutoCAD release, you may want to restore the newer AutoCAD default profile settings.

To restore AutoCAD default profiles

- 1 On the Application menu, click Options.
- 2 In the Options dialog box, Profiles tab, click the profile you want to restore and click Reset.
- 3 Click Yes.
The profile is reset to the newer default profile.

Use Migration Tools

Migration tools take the guesswork out of updating your custom files from previous releases. The tools help you to share drawings when you upgrade to a new release of an AutoCAD product. You can download the migration tools in several languages from the Autodesk website.

NOTE Because these are public tools, product support for them is limited to the Autodesk discussion groups.

The migration tools are as follows:

- **DWG TrueView 2010.** You can view, plot, and convert any AutoCAD product or an AutoCAD product-based drawing file for compatibility with the current AutoCAD drawing file formats.
- **ScriptPro.** Using ScriptPro, you can apply a set of commands to multiple drawings by specifying a script file and the list of drawings to which you want to apply the script.
- **AutoLISP Compatibility Analyzer.** Details AutoCAD compatibility issues found in AutoLISP files and the accompanying menu (MNL) files. When

a compatibility issue is found, the tool provides an explanation of the issue and suggestions on how to correct it.

Customize AutoCAD with Initial Setup

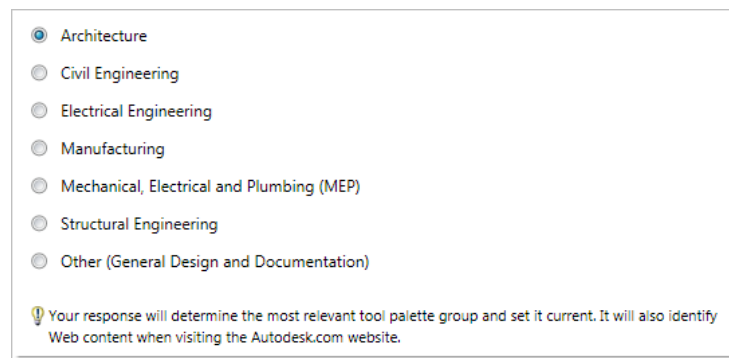
With Initial Setup you can perform some basic customization of AutoCAD the first time you start.

You respond to a series of questions that are used to gather information about specific features and settings in AutoCAD. You specify which industry best describes your work, add task-based tools to your default workspace, and specify the drawing template you want to use when creating a new drawing.

Select an Industry

When Initial Setup is first displayed, you are prompted to select an industry. Select one of the listed industries that is closest to the type of work that best describes the drawings you create. The following features and settings in AutoCAD and Initial Setup are affected by the industry you select:

- **Content Search.** Used as part of a generated query to find content from Autodesk Seek.
- **Partner product search.** Used as part of a generated query that is sent to the Autodesk Partner Products website to find relevant third-party utilities that might be beneficial to your work.
- **Initial Setup.** Used to determine a drawing template file that might be more appropriate to your industry for new drawings when compared to the supplied default templates that come with AutoCAD.

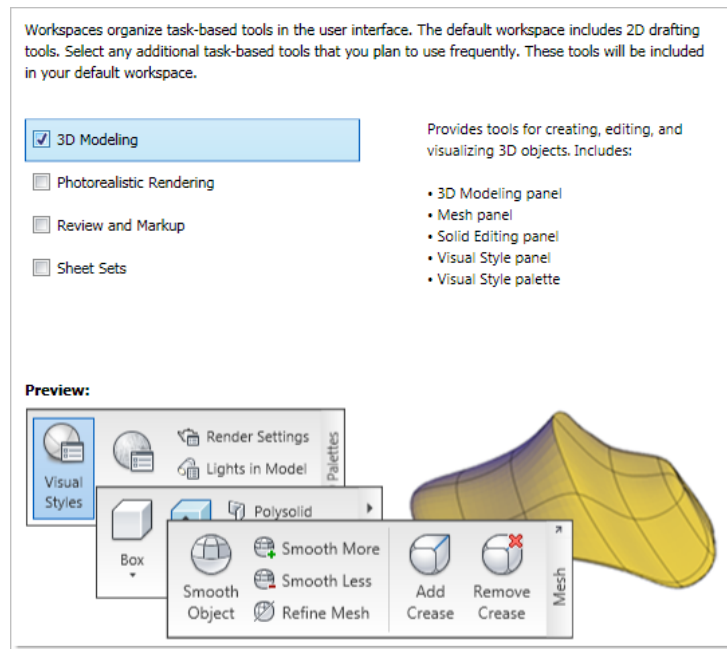


Add Task-based Tools

With Initial Setup, you can add task-based tools to your default workspace (for example tools to review red-line markups created from Autodesk Design Review or tools used to create photorealistic renderings).

The following task-based tools can be added to your default workspace from Initial Setup:

- 3D modeling
- Photorealistic rendering
- Review and markup
- Sheet sets

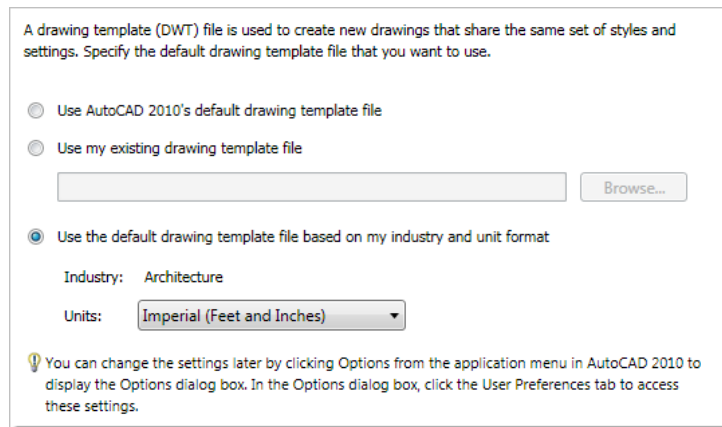


You can use the Customize User Interface (CUI) Editor to further control which task-based tools are displayed in a workspace. For more information about workspaces, see "Customize Workspaces" in the *Customization Guide*.

Specify a Default Drawing Template

With drawing templates you can reuse a set of settings and styles when you create a new drawing. In Initial Setup you can specify the default drawing template to use when you create a new drawing. Initial Setup has the following drawing template options:

- **Default drawing template.** Use the imperial or metric drawing template that is installed by default.
- **Existing drawing template.** Specify an existing drawing template that is available on a local or network drive.
If you migrated your custom settings and files from a previous release, the migrated default drawing template file is listed. For information about migrating custom settings and files from a previous release, see [Migrate Custom Settings](#) on page 26.
- **Industry focused drawing template.** Use the drawing template that is associated with the industry you selected in Initial Setup, and either the imperial or metric measurement type.



A drawing template (DWT) file is used to create new drawings that share the same set of styles and settings. Specify the default drawing template file that you want to use.

Use AutoCAD 2010's default drawing template file

Use my existing drawing template file

Use the default drawing template file based on my industry and unit format

Industry: Architecture

Units:

! You can change the settings later by clicking Options from the application menu in AutoCAD 2010 to display the Options dialog box. In the Options dialog box, click the User Preferences tab to access these settings.

Drawing templates are often project- or company-specific to ensure consistent styles and settings from one drawing to the next. It is recommended that you use a drawing template that follows your company's CAD standards.

For information about creating a custom drawing template, see "Use a Template File to Start a Drawing" in the *User's Guide*.

To customize AutoCAD with Initial Setup

- 1 Start AutoCAD.

- 2 In Initial Setup, Industry page, from the Industry list select the industry that best describes your work. Click Next.
- 3 On the Optimize Your Workspace page, select the task-based tools you want to display in your default workspace. Click Next.
- 4 On the Specify a Drawing Template File page, select the drawing template file that you want to use when creating new drawings. Click Start AutoCAD 2010.

To change the settings made with Initial Setup

- 1 Click the Application menu button ► Options.
- 2 In the Options dialog box, User Preferences tab, click Initial Setup.
- 3 In Initial Setup, Industry page, specify an industry that best describes your work. Click Next.
- 4 On the Optimize Your Workspace page, select the task-based tools you want to display in your default workspace. Click Next.
- 5 On the Specify a Drawing Template File page, select the drawing template file that you want to use when creating new drawings. Click Finish.
- 6 In the Options dialog box, click OK.

Export and Import Custom Settings from the Same Release

You can export your custom settings between systems running the same release of an AutoCAD product, or export the custom settings and later re-import them on the same computer if you need to reinstall AutoCAD. When exporting custom settings, a migration package is created that contains an XML file. This file contains custom settings, a listing of the custom files from local locations used with AutoCAD, and optionally, custom files in network locations.

The migration package is a ZIP file archive, so it has the file extension ZIP. During the import process, you select the ZIP file archive that contains the exported custom settings you want to merge onto your computer.

The following table lists the file types that are most commonly included in the migration package that is created from the Export Custom Settings dialog box.

Most Common File Types Included in the Migration Package	
File Name	File Description
<i>*.xml</i>	Information about the user profiles in the product and the original locations of the files in the export package.
<i>*.lin</i>	Linetype definitions.
<i>*.pat</i>	Hatch pattern definitions.
<i>*.pgp</i>	Shell commands and command alias definitions.
<i>*.pc3</i>	Configuration information for a plotter or printer.
<i>*.pmp</i>	Calibration and paper size settings that are used with a PC3 file.
<i>*.ini</i>	Configuration settings for some features.
<i>*.shx</i>	Information about text characters or shapes used with linetype definitions.
<i>*.mln</i>	Multiline style definitions.
<i>*.ctb</i>	Settings used to control the appearance of objects when plotting; the settings are arranged by the colors of the AutoCAD Color Index (ACI) system.
<i>*.stb</i>	Settings used to control the appearance of objects when plotting; the settings are grouped into names that can be assigned to a layer or object.
<i>*.cui</i>	Information for commands and user interface elements.
<i>*.mnl</i>	AutoLISP commands and procedures that a customization file is dependent on; must have the same name as a customization file in order to be loaded by the product.
<i>*.fmp</i>	Information about font mappings for True Type Fonts used in the In-place Text Editor.
<i>*.cus</i>	Custom dictionary entries.

Most Common File Types Included in the Migration Package

File Name	File Description
<i>*.psf</i>	Information about font substitution when exporting to a Postscript file.
<i>*.bmp</i>	Image used for a command in a customization file.
<i>*.atc</i>	Tools defined on a tool palette and the tool palette catalog. The file is not migrated from release to release, but is from computer to computer with the migration package.
<i>*.aws</i>	Order of the tools as they appear on a tool palette and other local settings. The file is not migrated from release to release, but is from computer to computer with the migration package.

The following table lists the file types that are not included in the migration package that is created from the Export Custom Settings dialog box.

Some of the File Types Not Included in the Migration Package

File Name	File Description
<i>*.actm</i>	Action macro file.
<i>*.arx</i>	ObjectARX application file.
<i>*.dcl</i>	Definitions for custom dialog boxes used with AutoLISP, ADS, or ObjectARX applications.
<i>*.dvb</i>	Visual Basic for Applications project file.
<i>*.fas</i>	Fast-load AutoLISP format file.
<i>*.fdc</i>	Definitions for fields; should not be modified.
<i>*.lli</i>	Landscape library; this file type is no longer supported due to the removal of the LANDSCAPE command.
<i>*.lsp</i>	AutoLISP source file that contains definitions for custom commands and functions.
<i>*.mli</i>	Render material library; this file type is no longer supported due to changes to the MATERIALS command.

Some of the File Types Not Included in the Migration Package

File Name	File Description
*.mnr	Resource images for a customization file; must have the same name as a customization file in order to be loaded by the product. The file is not included because it is auto-generated by the product when it is not present.
*.udl	Data connection settings used with dbConnect.
*.unt	Unit definitions used for converting a value from one unit type to another.
*.vlx	Visual LISP file that might contain multiple AutoLISP and DCL files compiled into a single file.

NOTE For information about customizing files and settings, see the *Customization Guide*, accessible from the Documentation link on the AutoCAD Installation wizard and in the Help system.

Export Custom Settings

When exporting custom settings, the custom files stored locally and all user profiles are exported to a migration package. You have the option to include custom files that are stored in network locations. During the creation of the migration package, you do not have any control over which types of files are included in the migration package.

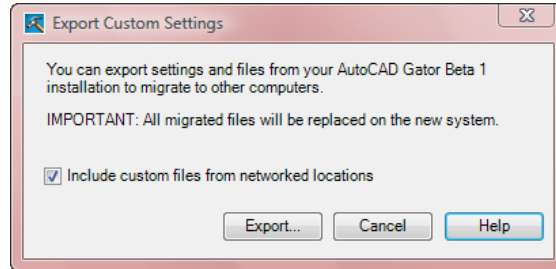
The Export Custom Settings dialog box is used to create the migration package so it can be imported to another computer or the same computer running the same release of the product.

NOTE You must launch AutoCAD at least once before you can export custom settings to a migration package.

To export custom settings

- 1 Do one of the following:
 - (Windows XP) Click Start menu ► Programs ► Autodesk ► <AutoCAD> ► Migrate Custom Settings ► Export <AutoCAD> Settings.
 - (Windows Vista) Click Start menu ► All Programs ► Autodesk ► <AutoCAD> ► Migrate Custom Settings ► Export <AutoCAD> Settings.

-
- 2 In the Export Custom Settings dialog box, select the Include Custom Files in Networked Locations option if you have files in network locations that you want included in the migration package that is created.



-
-
- 3 Click Export.
- 4 In the Export Custom Settings file navigation dialog box, enter a name and specify a location for the migration. Click Open.
A new ZIP file is created.
- 5 In the confirmation message box, click OK.

Import Custom Settings

By importing a migration package, you can configure AutoCAD in the same way as other computers that are running the same release of the product. Upon the successful import of the migration package, a message box is displayed giving you the option of viewing the migration log that is created. If any errors are encountered during the import process, they are logged in the migration log.

If files from a network location were added during the creation of a migration package, the files are copied to a different location only when the original network locations are not available when importing a migration package. If the files from a network location are found in the same location on the network, the files are not copied to the network location and are ignored during import.

During the import process, if the user profile <<Unnamed Profile>> exists, the user profile is automatically backed up before the migration package is imported. Local paths that exist as part of a user profile in a migration package are created automatically during the import process, but paths that are on a network drive or a drive that uses removable discs, are not created automatically.

NOTE You must launch AutoCAD at least once before you can import a migration package.

To import custom settings from a computer with the same release of AutoCAD

- 1 Do one of the following:
 - (Windows XP) Click Start menu ► Programs ► Autodesk ► <AutoCAD> ► Migrate Custom Settings ► Import <AutoCAD> Settings.
 - (Windows Vista) Click Start menu ► All Programs ► Autodesk ► <AutoCAD> ► Migrate Custom Settings ► Import <AutoCAD> Settings.
- 2 In the Import Custom Settings file navigation dialog box, select the ZIP file that contains the custom settings that were exported. Click Open.
- 3 On the AutoCAD message box, click OK.
Optionally, select the Display Log File After Closing This Dialog option before clicking OK to display the log file that was created during the importing of the migration package.

To view the migration log after custom settings imported

- 1 In Windows Explorer, navigate to the following locations: (Windows XP)
\Documents and Settings\<user profile>\Application Data\Autodesk\<product version>\<release number>\<language>\Migration.
(Windows Vista) *\Users\<user profile>\AppData\Local\Autodesk\<product version>\<release number>\<language>\Migration.*
- 2 Double-click *migration.xml* to open the file and view the details of your migration.

Migrating and Customizing Issues

This section outlines common issues and their solutions with regards to migrating and customizing AutoCAD.

What are the benefits of identifying my industry?

By identifying your industry, Initial Setup can determine which default drawing template might be the one that best fits your needs. Along with defining the default drawing template, the industry you choose is also used to:

- **Identify partner products.** Partner products are developed by third-party developers; they extend the base functionality of your product and add specific functionality that is related to your industry. For more information about partner products, see <http://partnerproducts.autodesk.com/>.
- **Control Autodesk Seek results.** Autodesk Seek is a content search site that contains symbols, specifications, and other design-related content that might be placed into a drawing or bid package. The specified industry filters the information that is found based on the content that is best related to you. For more information about Autodesk Seek, see <http://seek.autodesk.com/>.

How is this information being used?

The information gathered from Initial Setup is used to configure several different features and to help guide the future direction of the program. The following features are customized with Initial Setup:

- The default drawing template (DWT) file used to create new drawings.
- The industry that best relates to you to use for filtering search results on Autodesk Seek.
- Which task-based tools to display in a workspace.

No information is shared with Autodesk about the choices you make unless you participate in the Customer Involvement Program (CIP). For information about the Customer Involvement Program, see Join the Customer Involvement Program in the *User's Guide*.

What happens if I skip or cancel Initial Setup?

If you skip or cancel Initial Setup, AutoCAD is not changed from its current state. You can return to Initial Setup when AutoCAD is restarted by checking Remind Me the Next Time AutoCAD Starts on the Skip Initial Setup page or through the Options dialog box.

To change settings from Initial Setup through the Options dialog box

- 1 Click the Application menu button ► Options.
- 2 In the Options dialog box, User Preferences tab, click Initial Setup.
- 3 In Initial Setup, make the desired changes and click Finish.
- 4 In the Options dialog box, click OK.

What are the benefits of selecting task-based tools?

Workspaces control which task-based tools are displayed in the application window and when they are displayed. You can create different workspaces based on the types of drawings you work on. For more information about customizing the user interface and workspaces, see Work with the Customize User Interface (CUI) Editor and Customize Workspaces in the *Customization Guide*.

What is a workspace?

Workspaces are sets of menus, toolbars, palettes, and ribbon control panels that are grouped and organized so that you can work in a custom, task-oriented drawing environment. When you use a workspace, only the menus, toolbars, and palettes that are relevant to a task are displayed. For more information about customizing workspaces, see Customize Workspaces in the *Customization Guide*.

How do I make changes to a workspace at a later time?

Workspaces are used to control many of the tools displayed in the Application window of AutoCAD. You can modify the current workspace in a limited way from the Application window or you have full control over all aspects of a workspace with the Customize User Interface (CUI) Editor. For more information about customizing workspaces, see Customize Workspaces in the *Customization Guide*.

What is a drawing template file?

A drawing template (DWT) file is used to provide consistency for each new drawing (DWG) file that is created. DWT files can contain named objects, drawing based settings, and geometric objects. Stored named objects include layers, and text and dimension styles among others. Along with named objects, a DWT file can hold values for drawing based system variables, and any geometric object that might be common across multiple drawings such as a title block. For information about using a DWT file, see Use a Template File to Start a Drawing in the *User's Guide*.

How do I modify drawing templates at a later time?

Drawing template (DWT) files are no different than a drawing (DWG) file, with the exception of its file extension. Once a DWT file is opened, you can modify named objects such as layers, and text and dimension styles just as you would in a drawing. You open a DWT file with the OPEN command.

To open a drawing template (DWT) file

- 1 Click the Application menu button ► Open.
- 2 In the Select File dialog box, select Drawing Template (*.dwt) from the Files of Type drop-down list.
- 3 Browse to and select the drawing template (DWT) file you want to modify.
- 4 Click Open.
- 5 Make the desired changes to the DWT file.
- 6 Click the Application menu button ► Save.

What are the benefits of customizing AutoCAD?

Customizing AutoCAD provides many benefits that can increase your productivity and make your drawings have a consistent appearance. Customization can be as simple as creating a block that can be used in many drawings over and over again, such as a title block, to setting up a default template with Initial Setup, or customizing the user interface with the Customize User Interface (CUI) Editor. For information about customizing the user interface, see Work with the Customize User Interface (CUI) Editor in the *Customization Guide*.

How do I return to this later?

You can return to Initial Setup in two ways. You can check the Remind Me the Next Time AutoCAD 2010 Starts check box on the Skip Initial Setup page. Initial Setup displays the next time you start AutoCAD. You can also change settings for Initial Setup through the Options dialog box. To change the settings made with Initial Setup from the Options dialog box, see [To change settings from Initial Setup through the Options dialog box](#) on page 42.

Installation Troubleshooting

3

This section provides solutions to installation issues and answers to commonly asked questions that may arise while installing your product(s). Additional troubleshooting information and support is also available at <http://autodesk.com/support>.

General Installation Issues

The following outlines common issues and their solutions that may arise while you are performing a general installation of your product(s).

How can I check my graphics card driver to see if it needs to be updated?

It is recommended that you verify and update your graphics card driver to optimize your program. Use the following procedure to identify your current graphics card driver.

To identify your graphics card driver

- 1 Start AutoCAD.
- 2 At the command line, enter **3dconfig**.
- 3 In the Adaptive Degradation and Performance Tuning dialog box, click View Tune Log.
- 4 Review the 3D Device section for information about your system's graphics card driver and driver version.

TIP Many newer graphic cards offer tabbed pages where you can learn more precise information about your specific graphic card. If specific tab pages are present, refer to them instead of the Adapter tab.

What is a text editor used for?

The text editor you designate during installation is used for editing text files such as PGP and CUS dictionary files while you are running your product.

When performing a Typical installation, what gets installed?

A Typical installation includes the following features:

CAD Standards	Contains tools for reviewing design files for compliance with your standards.
Database	Contains database access tools.
Dictionaries	Contains multi-language dictionaries.
Drawing Encryption	Allows you to use the Security Options dialog box to protect a drawing with a password.
Express Tools	Contains AutoCAD support tools and utilities (not supported by Autodesk).
Fonts	Contains AutoCAD fonts and TrueType fonts.
Autodesk Impression Toolbar	The Impression toolbar allows you to quickly export any view to Autodesk Impression for advanced line effects.
Autodesk Seek	Autodesk Seek. NOTE Seek will only be installed in the English version of AutoCAD.
New Features Workshop	Contains animated demos, exercises, and sample files to help users learn the new features.

License Transfer Utility	Allows users to transfer an Autodesk product license between computers. NOTE The utility will not be installed on unlocked versions of AutoCAD.
Migrate Custom Settings	Migrates custom settings and files from previous version of your product to this version.
Initial Setup	Allows users to set up their initial configuration of AutoCAD (online content, workspaces) based on their units system, industry, and commonly used task-based tools.
Reference Manager	Allows users to view and edit the paths of externally referenced files associated with a drawing.
Samples	Contains various feature sample files.
VBA Support	Contains Microsoft Visual Basic for Applications support files.

Why should I install the Material Library?

The Material Library contains over 300 professionally made materials that you can immediately apply to objects in your model. They can also act as a basis for custom materials that you want to create.

For more information regarding materials, see Materials and Textures in the *AutoCAD User's Guide*.

Where are my product manuals?

Documentation for AutoCAD is in two formats: PDF files and CHM files.

- PDF files are made available during installation; click the Documentation link in the installer.
- CHM files are available after the product is installed; they are accessed in the Help system in the product.

The PDF files are also available from within your installed product's Help system.

Files are also installed to the \<AutoCAD>\Help folder.

Licensing Issues

This section outlines common issues and their solutions with regards to software licenses and licensing your product(s).

What is the difference between a stand-alone license and a network license?

Stand-alone licensed products are registered and activated to an individual workstation. While the software can be installed on multiple systems in your facility, the license only allows one system to be operational. If you need to run more systems, you need to purchase more stand-alone licensed products, or consider converting to network licenses.

Network licensed products rely on the Network License Manager to keep track of software licenses. The software can be installed and run on multiple systems, up to the maximum number of licenses you've purchased. The Network License Manager "checks out" licenses until they are all in use. No further systems can run the program until a license is "checked in." If you need to run more systems, you can purchase additional licenses for the Network License Manager to maintain.

Stand-alone licensed products are registered and activated to an individual workstation. While the software can be installed on multiple systems in your facility, the license only allows one system to be operational. If you need to run more systems, you need to purchase more stand-alone licensed products, or consider converting to *multi-seat stand-alone* licenses.

You cannot purchase a network licensed version of PRODNAME. However, a multi-seat stand-alone licensed version is available that does not rely upon servers to maintain licenses. Multi-seat stand-alone licensing means that each installation of your product uses a single serial number for registration and activation.

What is the benefit of using a network licensed version of the software?

Network licensed products are recommended for large drafting/design facilities, classrooms, and lab environments. The main advantage is that you can install products on more systems than the number of licenses you have purchased (for example, purchasing 25 licenses but installing on 40 workstations). At any one time, products will run on the maximum number of systems for which you have licenses. This means you get a true floating license. If software needs to be run on more systems, additional licenses can be purchased.

Registration and activation occurs only once and the licenses are maintained on your Network License Server.

What is Internet Explorer used for?

After installing your product, you can operate in *trial mode* for a given number of days. Whenever you launch the program, you are prompted to activate the software. When you choose to activate the software, Internet Explorer makes this process much faster. Once you entered your registration data and submit it to Autodesk, an activation code is returned and you are not prompted again during startup.

Uninstall and Maintenance Issues

This section outlines common issues and their solutions with regards to adding and removing features, reinstalling or repairing your installation, and uninstalling products.

When adding or removing features, how can I tell what features get installed by default?

To quickly see what gets installed during a typical, default installation, click the Restore Defaults button on the Add/Remove Features page.

CAD Standards	Contains tools for reviewing design files for compliance with your standards.
Database	Contains database access tools.

Dictionaries	Contains multi-language dictionaries.
Drawing Encryption	Allows you to use the Security Options dialog box to protect a drawing with a password.
Express Tools	Contains AutoCAD support tools and utilities (not supported by Autodesk).
Fonts	Contains AutoCAD fonts and TrueType fonts.
Autodesk Impression Toolbar	The Impression toolbar allows you to quickly export any view to Autodesk Impression for advanced line effects.
Autodesk Seek	Autodesk Seek. NOTE Seek will only be installed in the English version of AutoCAD.
New Features Workshop	Contains animated demos, exercises, and sample files to help users learn the new features.
License Transfer Utility	Allows users to transfer an Autodesk product license between computers. NOTE The utility will not be installed on unlocked versions of AutoCAD.
Migrate Custom Settings	Migrates custom settings and files from previous version of your product to this version.
Initial Setup	Allows users to set up their initial configuration of AutoCAD (online content, workspaces) based on their units system, industry, and commonly used task-based tools.
Reference Manager	Allows users to view and edit the paths of externally referenced files associated with a drawing.
Samples	Contains various feature sample files.
VBA Support	Contains Microsoft Visual Basic for Applications support files.

Is it possible to change the installation folder when adding or removing features?

Once your product is installed, you cannot change the installation path from the Add/Remove Features page. Changing the path while adding features results in program corruption, so it is not an option.

When should I reinstall the product instead of a repair?

You should reinstall your product if you accidentally delete or alter files that are required by the program. Missing or altered files adversely affect the performance of your product and cause error messages when you try to execute a command or find a file.

If an attempt to repair an installation fails, reinstalling is the next best option.

Do I need my original disc to reinstall my software?

When performing a reinstall of the product, you do not need to have the original discs on hand. Installation data is cached locally on your drive and that data is reused when reinstalling.

After repairing my installation, is it possible to recover my settings?

Custom settings can be exported and later re-imported to the same system in case you have to repair the installation of your program.

For more detailed information regarding exporting and importing custom settings, see [Export and Import Custom Settings from the Same Release](#) on page 35.

When I uninstall my software, what files are left on my system?

If you uninstall the product, some files remain on your system such as files you created or edited (drawings or custom menus).

Your license file also stays on your workstation when you uninstall your product. If you reinstall on the same workstation, the license information remains valid and you do not have to reactivate the product.

Index

3D video cards 5

A

activating programs 18
administrator permission requirements
stand-alone installation 5
Adobe Flash Player 5
aliases
migrating 26
anti-virus software 7
applications
anti-virus software 7
closing during installation 7
ARG files 27
Autodesk Design Review
installing 22
viewing DWFs 22
Autodesk products
versions of 25
AutoLISP Compatibility Analyzer 31

B

browsers 2–3
bundled products 9

C

computers 2
Content Search 32
converting
menu files to CUI format 26
CUI (customization) files 26
custom settings
exporting to other systems 35, 38
importing migration packages 35,
39
migrating from previous releases 9,
25
restoring default settings 31

customization files (CUI)
migrating older menu files to 26
customizing
Initial Setup 32
installation 19
issues 40
migrating older customization
files 25
migration packages 35
restoring default settings 31
templates 32
tips 40
workspaces 32

D

data loss 7
default templates 34
Design Review
installing 22
viewing DWFs 22
display adapters 5
displaying
migration log files 30
downloading
migration tools 25
DWF files
Design Review 22
DWFx files
Design Review 22
DWG TrueView migration tool 31

E

exporting
custom settings as migration
packages 35, 38

F

faxing registration information 19

- files
 - custom settings files 36
 - migration packages 36
 - network locations 38–39
- Flash Player 5
- G**
- graphics cards 5
- H**
- hard disks
 - system requirements 2
- hardware
 - installation requirements 2
- hatches
 - migrating patterns to new releases 26
- I**
- importing
 - custom settings from migration packages 35, 39
- industries 32
- Initial Setup 32
- installation
 - adding or removing features 19
 - Autodesk Design Review 22
 - Initial Setup 32
 - Installation wizard 10
 - licensing 48
 - multiple or bundled products 9
 - preparing for 1
 - registration and activation 18
 - repairing 49
 - repairing damaged installations 21
 - serial numbers 6
 - side-by-side 25
 - stand-alone installation 1, 10
 - starting 19
 - system requirements 2
 - troubleshooting 45
 - typical 46

- uninstalling 22, 49
- Installation wizard 10
- interface
 - migrating custom settings for 26
- Internet
 - program registration and activation 18
- Internet Explorer (Microsoft) 2–3

- L**
- languages
- multi-language support 7
- selecting during installation 7
- legacy menu files 26
- licenses
- issues 48
- limited user rights 19
- LIN files (linetype library) 26
- linetypes
- migrating to new releases 26
- log files
- migration log files 30
- M**
- mailing registration information 19
- memory (RAM)
- system requirements 2
- menus
- migrating to new releases 26
- Microsoft Internet Explorer 2–3
- Microsoft Windows operating systems 2
- migrating
- custom settings from previous releases 9, 25
- issues 40
- migration log files 30
- migration packages 35
- migration tools 31
- restoring default settings after 31
- tips 40
- migration log file 30
- migration packages 35
- migration tools 31

- MNS files (source menu)
 - migrating 26
- MNU files (menu template)
 - migrating 26
- monitors 2, 4
- multi-language support 7
- multi-product bundles 9
- multi-seat stand-alone installations 1

N

- network adapters 5
- networks
 - custom files located on 38–39

O

- operating systems
 - system requirements 2

P

- Partner Product search 32
- PAT files 26
- PC3 files (plotter configuration)
 - migrating 26
- PGP files (program parameters) 26
- pointing devices
 - system requirements 2
- previous releases
 - migrating custom settings from 9, 25
 - user profile default settings and 31
- processors 2
- Product Activation wizard 18
- product keys 18
- product manuals 47
- Product Partner search 32
- profiles (user)
 - importing custom settings 39
 - migrating custom settings 26
 - restoring default settings 31

R

- RAM
 - system requirements 2
- reinstalling programs 21, 49
- removing
 - uninstalling programs 22
- repairing
 - damaged installations 21, 49

S

- ScriptPro migration tool 31
- searching
 - customized for industries 32
 - Partner Product search 32
- serial numbers
 - stand-alone installation 6
- service packs 2
- shortcuts
 - creating 19
- side-by-side installation 25
- software installation requirements 2
- stand-alone installations
 - process 10
 - program registration and activation 18
 - Quick Start 1
- system requirements
 - stand-alone installations 2

T

- task-based tools 33
- templates
 - customized for industries 32
- templates
 - default 34
- tools
 - migration tools 25, 31
 - task-based tools 33
- trial mode 18
- troubleshooting installation 45

U

- uninstalling programs 49
- upgrade installations 25
- upgrading
 - installing newer releases 9
- user interface
 - migrating custom settings for 26

V

- video cards 2

- video monitors 2, 4
- virus software 7

W

- web browsers 2–3
- Windows operating systems
 - system requirements 2
- workspaces
 - customized for industries 32