



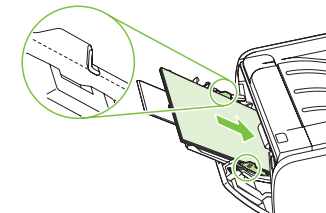
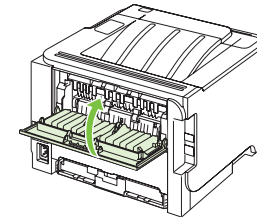
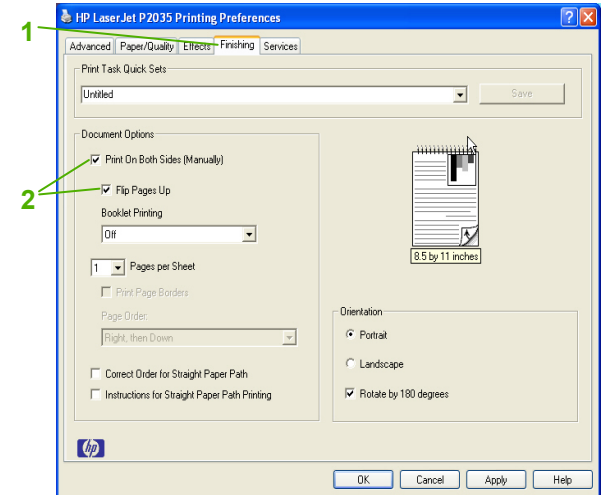
## Print on both sides (duplex)

### How do I?

Print on both sides (duplex) using the top output bin

### Steps to perform

- 1 Open the printer driver and click on the **Finishing** tab,
- 2 Click **Print On Both Sides (Manually)**. If you will bind the document along the top edge, click **Flip Pages Up**.
- 3 Close the straight-through output door.
- 4 Print side one of the document using Tray 1.





How do I?	Steps to perform
Print on both sides (duplex) (continued)	<p>5 After side one has printed, remove the remaining paper from Tray 1 and set it aside until after you finish the manual two-sided print job.</p> <p>6 Gather the printed pages and straighten the stack.</p> <p>7 Return the stack to Tray 1 with the printed side down and the top edge toward the product.</p> <p>8 Press the <b>Go</b> button to print side two.</p> 